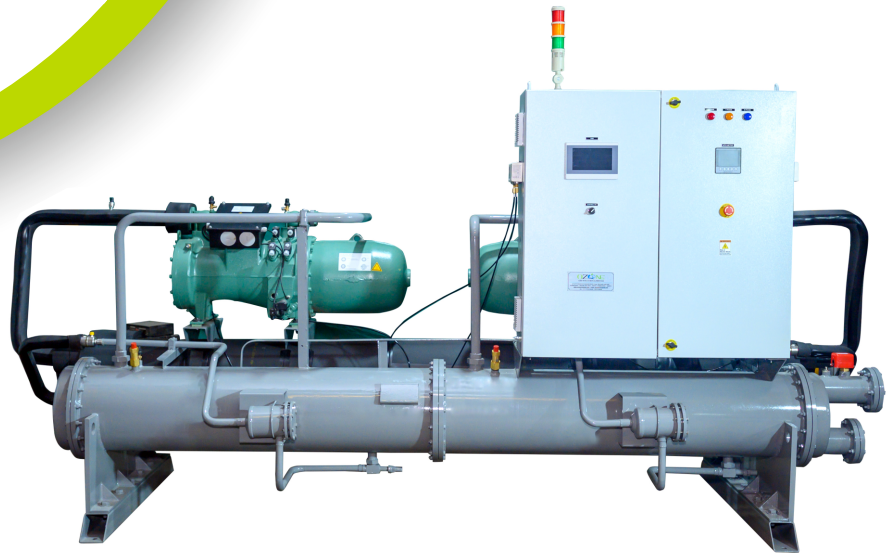


Mfg. All Type of Chiller & Refrigeration Equipment
Installation Services & Maintenance for HVAC Project



Water-Cooled Screw Chillers



High-Performance Water-Cooled Screw Chillers for Industrial Process Cooling

We offer a wide range of water-cooled screw chillers, designed and manufactured using high-grade materials to ensure durability and efficiency. Our industrial screw chillers are equipped with premium screw compressors sourced from Blitzer (Germany) and Fra scold (Italy), providing reliable and energy-efficient cooling solutions

High-Efficiency Cooling Systems – Capacity from 140 KW to 1127 KW | Energy Saving & Reliable Performance

Our **high-efficiency cooling systems** offer a **capacity range from 140 KW to 1127 KW**, designed to provide **superior reliability** and **high energy efficiency** for a wide range of industrial applications. With **advanced technology** and eco-friendly features, these systems ensure optimal performance, long equipment life, and significant **energy savings**.

Key Features :

- **Capacity ranges from 140 KW to 1127 KW**, catering to large-scale cooling needs.
- **Universal temperature range** from **+20°C to +5°C**, offering flexibility for various cooling applications.
- Designed for **superior reliability**, ensuring consistent performance and reduced maintenance costs.
- **High energy efficiency** reduces operational costs while maintaining peak performance.
- **Long equipment life**, minimizing the need for frequent replacements and repairs.
- **Variable frequency drive (VFD)** option available for optimized energy usage and load adaptation.
- **User-friendly interface** with a **graphical display** for easy control and monitoring.
- Provides **clean energy** solutions with **intelligent management** for environmentally sustainable operations.
- The perfect **solution for energy-saving equipment**, ensuring reduced energy consumption without compromising performance.
- **Easy interface with BMS (Building Management Systems)** through industry-standard protocols for seamless integration.
- Uses **ozone-friendly refrigerant HFC-134a**, ensuring an environmentally friendly operation.
- **Highly reliable design** with the **best-in-class COP** (Coefficient of Performance), ensuring maximum efficiency and minimal energy loss.
- Equipped with an **advanced, fully automatic PLC-based controller** for **remote operations** and **data logging** capabilities, offering real-time monitoring and control.
- **Stepless capacity control** from **25% to 100%**, precisely adapting to **varying process loads**, optimizing energy consumption.
- Includes **anti-freeze safety** and **water flow switches** for added protection and safety.
- Equipped with **world-class safety controllers** for both **equipment and compressors**, ensuring secure, reliable operation.
- **Custom-built machines** available to meet specific project requirements for tailored solutions.
- **100% functionally tested** to meet the highest standards of quality and reliability.
- Designed and manufactured in compliance with **superior design and manufacturing standards**, ensuring the highest quality and performance.

Maximize your cooling system's **energy efficiency** and **reliability** with our **high-performance systems**, designed for **long-term durability** and optimized for **cost-effective operation**.

- ✓ Multiple screw compressors in a single unit, each with an independent refrigeration circuit for enhanced performance and reliability
- ✓ ISO-certified manufacturing unit, ensuring compliance with industrial cooling standards
- ✓ Eco-friendly operation with CFC-free refrigerants like R-407c and R-134a
- ✓ Built-in process pump and stainless-steel chilled water expansion tank for seamless cooling
- ✓ Rated for ambient temperatures up to +50°C and cooling tower water temperatures up to +37°C at the condenser inlet
- ✓ Microprocessor-controlled system, suitable for process cooling applications ranging from +20°C to -0°C

Site support with Amc options are available for entire life of equipment's

Our water-cooled screw chillers are ideal for industrial refrigeration, HVAC systems, and process cooling applications in sectors such as pharmaceuticals, food processing, plastic moulding, and chemical industries. These energy-efficient chillers provide precise temperature control, reducing operational costs while ensuring optimal performance.

For high-efficiency water-cooled chillers, industrial screw chillers, and reliable process cooling solutions, trust our ISO-certified manufacturing expertise.

Applications :

- Comfort Air-Conditioning
- Chemical & Pharmaceuticals
- Engineering & Industrial
- Commercial & Institutional
- Hospitals & Hospitality
- Telecommunications
- Laser Technology
- Welding Engineering
- Aeronautical Testing Facility
- Defense Laboratory Testing facility
- Computer Chip Manufacturing
- Medical Process
- Blow Mold Machines
- Injection Molding Machines
- Plastics Processing
- Electroplating Industry
- Factory Furnaces
- Laboratory Equipment's
- Food and Beverage Industry
- Food Process Industry
- Anodizing Plants
- Dye and Pigment Manufacturing
- Plasma Spray Machines
- Induction Hardening Machine
- Foundries

Water-cooled Screw Chillers



Key Features :

Water Cooled Screw Chiller Technical Specifications																	
Description	Model	OAS480TSWC	OAS600TSWC	OAS720TSWC	OAS840TSWC	OAS960TSWC	OAS1080TSWC	OAS1260TSWC	OAS1344TSWC	OAS1560TSWC	OAS1680TSWC	OAS2040TSWC	OAS2280TSWC	OAS2700TSWC	OAS3060TSWC	OAS3480TSWC	OAS3864TSWC
Cooling Capacity	kcal/h	120378	150472	180567	210662	240756	270851	315563	337059	391229	421324	511607	571797	676698	766981	872742	969045
	KW	140	175	210	245	280	315	367	392	455	490	595	665	787	892	1015	1127
Max. Input Power	KW	52	65	78	88	96	102	112	132	150	160	186	246	255	280	280	332
Max Current	A	86	108	128	144	162	170	180	216	246	260	310	370	240	450	450	566
Power Supply		380-420V/3PH,50Hz															
Refrigerant	Type	R-134A / R-407C / R-404A / R-22A															
Compressor	Type	Compact Screw Compressors															
	Make	Bitzer / Ref-com / Hanbell / frascold															
	Power(KW)	28.1	34.9	40.8	48.2	52.7	61.8	71.5	74.1	84.6	94.2	106	118	141.8	155	171	212
	Capacity Control	100-75-50-25% (Standard)															
Condensor	Type	Shell and Tube type heat exchanger															
	Tubes	3/4 " OD Copper Seamless Tube OD Fine 46 FPI grooved for better heat transfer															
	Heating Capacity(KW)	171.4	215	255	294	333	384	439	466	537	594	703	794	938	1051	1189	1341
	Condensing Temp.	40 C	40 C	40 C	40 C	40 C	40 C	40 C	40 C	40 C	40 C	40 C	40 C	40 C	40 C	40 C	40 C
	Flow m3/h	34.7	44.5	52.6	60.8	69.2	79.9	91.2	96.7	111.2	123.3	145.8	164	194.3	218.6	246.8	278.4
	inlet/outlet	3"	3"	3"	4"	4"	4"	4"	5"	5"	5"	5"	6"	6"	8"	10"	10"
Evaporator	Type	Shell and Tube type heat exchanger															
	Tubes	5/8 "OD Copper Seamless Integrally finned & Inner Grooved for better heat transfer.															
	Cooling Capacity(KW)	140	175	210	245	280	315	367	392	455	490	595	665	787	892	1015	1127
	Temperature at outlet	7 C	7C	7C	7C	7C	7C	7C	7C	7C	7C	7C	7C	7C	7C	7C	7C
	Temperature at Inlet	12 C	12C	12C	12C	12C	12C	12C	12C	12C	12C	12C	12C	12C	12C	12C	12C
	Flow m3/h	24.1	30.1	36.2	42.2	48.2	54.3	63.2	67.5	78.4	84.4	102.5	114	135.6	153.7	175	194.3
	inlet/outlet	3"	3"	3"	4"	4"	4"	4"	5"	5"	5"	5"	6"	6"	8"	10"	10"
Control Panel	HMI 7" Disply PLC Delta Programenabal Fully Automatic Safety Controller , MCB / Contactor / Relay/ SPPR , All Make Schneider and Sensor, RTD Type,Cables- Make Polycab																
Safety protection	Compressor inner protection, over current protection, high/low pressure protection, over temperature protection, flow rate protection, phase sequence/phase missing protection, low level coolant protection, anti freezing protection, exhaust overheat protection																
Dimension	Length	2470	2900	2900	2900	2950	2950	3400	3400	3400	3400	3700	3700	4400	4400	4700	4700
	Width	1100	1100	1200	1200	1200	1200	1300	1300	1300	1300	1430	1430	1600	1600	1740	1740
	Height	1400	1450	1450	1500	1600	1600	1750	1750	1750	1750	1800	1800	1850	1850	2050	2050

